



READ OUR

Guidelines

BEFORE ENTERING THE
World Of Wonder

CHILDREN UNDER THE AGE OF 14 MUST BE ACCOMPANIED BY AN ADULT AT ALL TIMES.

MAXIMUM TIME ALLOWED PER TICKET:
90 MINUTES

No...

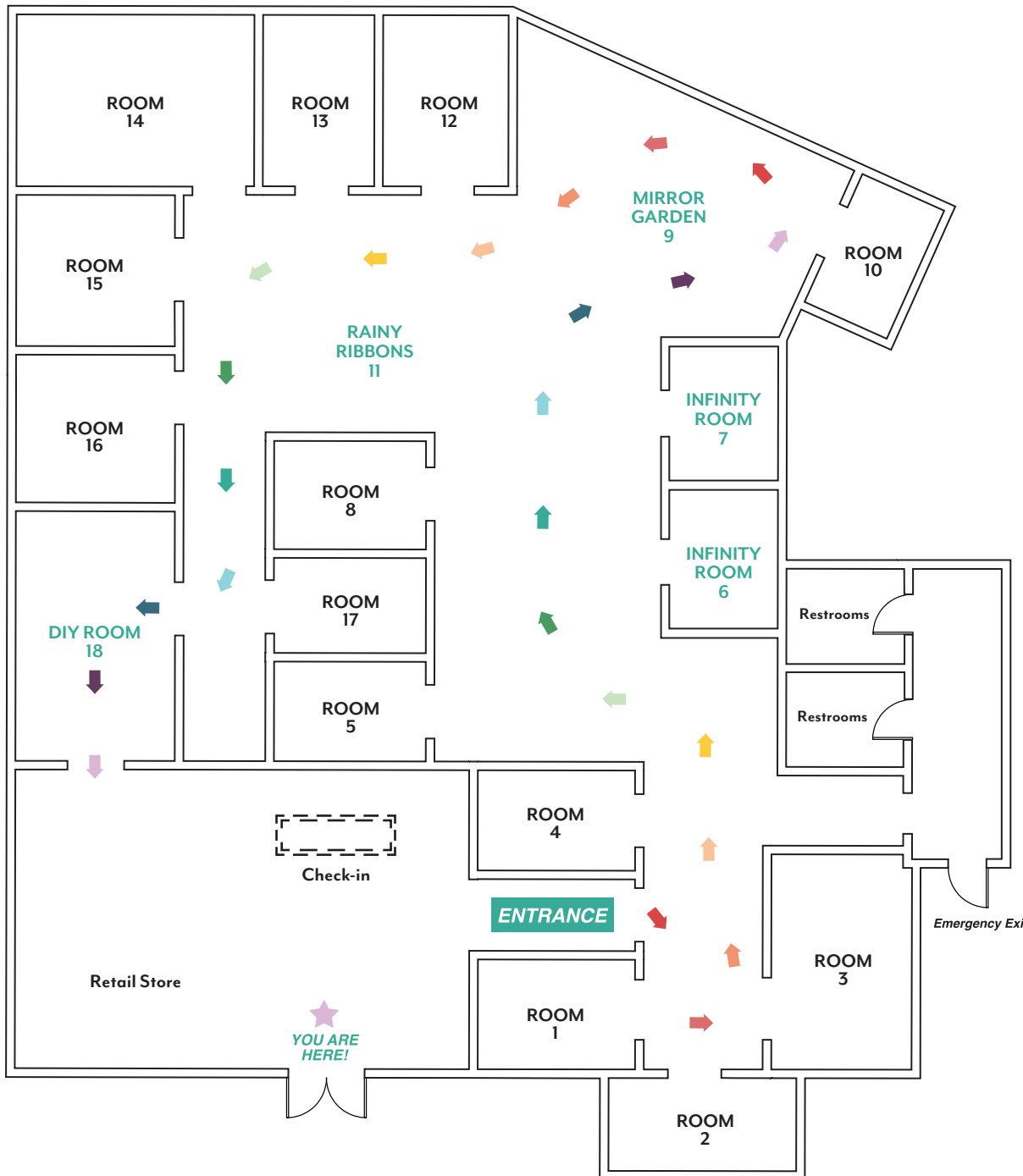
Food, drink, or strollers.

Sitting, standing, hanging, climbing, grabbing, pushing, or pulling on the installations. In other words, please be careful with them.

Do!

Take your time! Savor the moment, contemplate the illusion, get the perfect shot. Be respectful of others in the space and do not monopolize a room. Wonder Wonder is a one-way experience — please don't revisit installations you've already passed.

Take all the photos your heart desires.



ART INSTALLATION

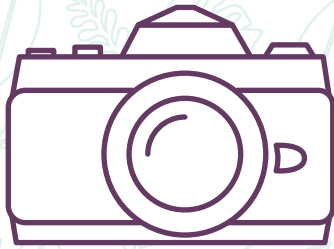


PHOTO PLAYGROUND



IMMERSIVE EXPERIENCE

WONDER WONDER

Welcome to Wonder Wonder, an ever-evolving home of imagination and exploration. Weave your way through art installations, light displays, and technological contraptions. Awe-inspiring, mystifying, disorienting, and beautiful, Wonder Wonder seeks to open your eyes to something you've never seen or experienced before. Inspired by art, technology, light, and the senses, our rooms will invite curiosity and engage viewers of all ages and backgrounds.

The installations are rotated monthly as we explore new directions with a wide variety of artists. Feedback is welcome and helps set the direction for future experiences.

HOURS

MON-FRI 1PM-8PM
SATURDAY 11AM-8PM
SUNDAY 11AM-6PM

*please note — final entry is one hour before closing

wonderwonder.us

BOULDER@WONDERWONDER.US
720.429.1895
TWENTY NINTH STREET MALL
1685 29TH ST, SUITE 1268
BOULDER, CO 80301

WONDER WONDER

YOUR MAP TO THE
WEIRD, WILD,
AND WONDERFUL

Tag us!

@wonderwonder.us
#wonderwonder